

## Bipolar Hip System

### Product Information

#### Bipolar Acetabular Cup

REF. NO.	Size (mm)
130030038S	38
130030040S	40
130020042S	42
130020044S	44
130020046S	46
130020048S	48
130020050S	50
130020052S	52
130020054S	54
130020056S	56
130020058S	58

#### Bipolar Acetabular Liner

REF. NO.	Size
130300038S	38/24
130300040S	40/24
130300042S	42/24
130300044S	44/24
130300046S	46/28
130300048S	48/28
130300050S	50/28
130300052S	52/28
130300054S	54/28
130300056S	56/28
130300058S	58/28

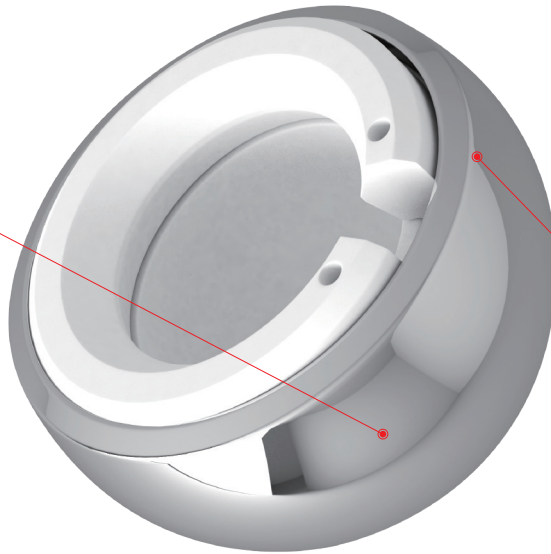
#### Femoral Head

REF. NO.	Size (mm)
130010001S	28+1.5
130010005S	28+5
130010008S	28+8.5
130010012S	28+12
130010015S	28+15.5
130290000S	24+0
130290003S	24+3.5

### Bipolar Hip System



High-polished design reduces the wear.



Multiple specifications meet different needs.

The optimal locking mechanism eliminates the risk of head dislocation.



Ease for installment, disassemble and surgical operation.

## Warning

This flyer is just for understanding the specific product features. For clinical usage, please refer to the surgical guide. Instruction by experienced surgeon is highly recommended.